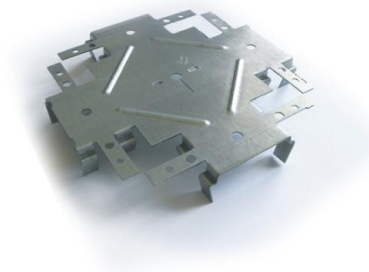


TECHNICAL SHEET OF THE PRODUCT

Cross Connector - K09 4B

BRIEF CHARACTERISTICS:

The single-level double-sided connector K09 4B is used to connect CD60 profiles and this allows the expansion of the structure.



TECHNICAL DATA:

	Cross connector – K09 4B
thickness of material	0,8 mm
material	DX51
coating	galvanizing 100 g/m ²
	exposure class B
length	148 mm
weight	0,134 kg/pcs
small package	24 pcs
large package	3 000 pcs/PAL
reaction to fire	class A1